

ENVIRO

Environmental Test Chambers



ENVIRO Environmental Test Chambers



ENVIRO Environmental Test Chambers are uniquely designed and built for long life performance and lasting reliability with typical features to suit the versatile testing needs of stringent international standards.

The ENVI-Series Environmental Chambers is an outcome of the continual improvement of NAE Envirosystems over twenty-five years in meeting the expectations of variety of requirements of various costumers.

Developed with the best engineering practices enhancing the inherent reliability in the system ENVI-Series Climatic Chambers are uniquely designed to suit any ergonomic conditions to perform various testes of temperature and relative humidity as per international standards.

ENVIRO-Series Environmental Chambers are available in different ranges of parameters and capacities as per specific testing requirements and all standard sizes are available in stock to meet the just-in-time testing needs of various industries.

A modular design with mono-block construction with high-grade quality material: fully vacuumised multipane window for condensate free view of the specimen: environmental friendly non-CFC refrigeration system with safety protected devices for high cooling efficiency:

Direct vaporization system humidification with low-pressure vapor boiler and refrigeration based de-humidification for accurate control of relative humidity. Elegant resistive analog color touch screen controller programmer with unique features like diagnostic history, USB port download, Ethernet facility etc for trouble free maintenance and operation of the system from any distance.



ENVIRO Environmental Test Chambers

An elegant module with user-friendly access to all the sections.

Outer material is primed and phosphated with Epoxy based electrostatic powder coating enduring a pleasant appearance. Exterior surface will have high wear resistance. Interior is made of vapor tight pre-polished Stainless Steel of high grade, with adjustable/removable shelving.

Outer & Inner is separated by multi-layered asbestos free mineral fiber absolutely no condensation and other conduction related problems.



All sections are easily accessible for maintenance feasibility. The control panel is located in front of the chamber with an easily accessible door. The components and switch gear used are all CE and UL approved, where every component is accepted and available globally. The motors used are standard frame ensuring easy replacement across the globe, unlike other manufacturers who use extended shaft motors, where the user is compelled to contact the manufacturer for spares or replacements.

The refrigeration compartment is accessible from the sides and all the suction lines have been adequately insulated to avoid any condensation. All lines are mounted on a chassis and provided with vibration eliminators to ensure leak free operation.



Precise humidity control system

Low-pressure droplet free vapor boiler using direct vaporization system is used for stimulation the required humidity. Reservoir with automatic float switch for constant level maintenance of water. The recommended de-mineralized water pump for continuous based dehumidification system to achieve the desired level of lower level humidity.



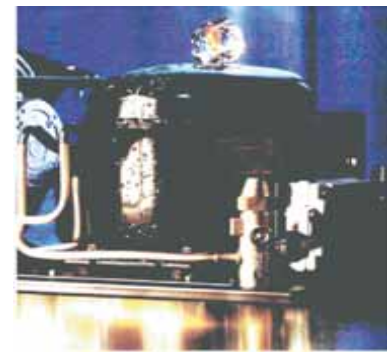
Test Space Conditioning

Air circulation within the chamber will be laminar flow ensuring a uniform airflow all across the chamber. Only the impeller will be exposed in the conditioning plenum with drive motor outside. Conditioning plenum will be covered with a removable sheet providing easy access for maintenance.



Heating System

Fast responding Stainless steel sheathed air heaters are used to achieve the desired positive temperature. Air heaters are placed in the conditioning plenum such that there is no direct radiation from the heaters onto the test specimen.



Highly efficient refrigeration system

An ultra low temperature application compressor is used to achieve and maintain the required negative temperatures. Non -CFC eco-friendly refrigerants are used with components complying to all international safety and environmental guidelines. Automatic oil return, bypass facilities, brazed plate heat exchangers and thermostatic expansion valves are used in all systems, ensuring smooth and reliable performance.

ENVIRO Environmental Test Chambers



The DIGI-TOUCH Operator Interface Controller combines unique capabilities normally expected from high-end units with a very affordable price. It is built around a high performance core with integrated functionality. This core allows DIGI-TOUCH to perform many of the normal features of the Paradigm range of Operator interfaces while improving and adding new features. The DIGI-TOUCH is able to communicate with many different types of hardware using high-speed RS232/485 communications ports and Ethernet 10 Base T/100 Base-TX communications. In addition, the DIGI-TOUCH features USB for fast downloads of configuration files and access to trending and data logging. A CompactFlash socket is provided so that Flash cards can be used to collect your

Web-Enabled Graphic Operator Interface Controller.

Remote monitoring and operation

The most on-board comms ports

Internet Explorer based comm

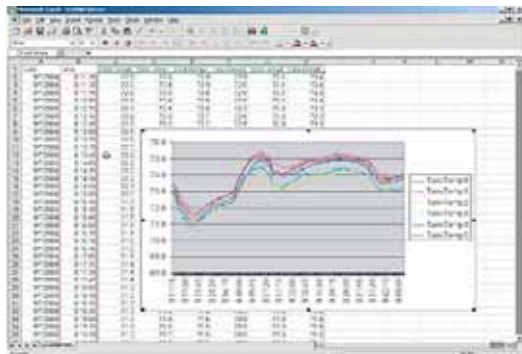
Built-in Ethernet

trending and data logging information as well as to store larger configuration files. In addition to accessing and controlling of external resources, the DIGI-TOUCH allows a user to easily view and enter information. Users can enter data through the touch screen and/or front panel 5-button keypad.



Reduce software and support costs. Use common office applications that you already have. Internet Explorer or Netspace is all that you need to access the DIGI-TOUCH, avoiding the cost and administration of added software.

Internet Connectivity!!



Immediately provides usable production data. Why users need plug-ins or converters to gather process data? By storing logged data in CSV file format, applications such as Microsoft Excel or Access can open and analyze process information- The DIGI-TOUCH series stores data un a format that users can immediately use.

Lower manpower and travel costs. Why check up on equipment performance manually when you can have the process notify you of pending failure?

The DIGI-TOUCH series can connect via Ethernet, landline modems, or even cellular modems to reach you anywhere in the world. With built-in email and text messaging functions, the DIGI-TOUCH allows you to focus only on the areas of concern.



256Mb flash card is provided as standard equipment, giving the user Virtually unlimited data storage with CompactFlash.

An integrated CompactFlash slot accommodates inexpensive and readily available Type I and II CompactFlash cards that lets you collect, retain and transfer data easily.

Faster data transfer and downloading with USB. The DIGI-TOUCH controller features a convenient USB port for fast downloads of configuration files from a PC as well as trending and data logging uploads to your PC for analysis.



ENVIRO Environmental Test Chambers

Models Available

Models	ENVI 120 AH	ENVI 120 BH	ENVI 225 AH	ENVI 225 BH	ENVI 540 AH	ENVI 540 BH	ENVI 1000 AH	ENVI 1000 BH	ENVI 1500 AH	ENVI 1500 BH
Test Volume (Litres)	120	120	225	225	540	540	1000	1000	1500	1500
Cubic Feet	4.2 cu. ft.	4.2 cu. ft.	7.9 cu. ft.	7.9 cu. ft.	19 cu. ft.	19 cu. ft.	35.3 cu. ft.	35.3 cu. ft.	53 cu. ft.	53 cu. ft.
Internal Chamber Dimensions										
Width (W)	500mm 19.67"	500mm 19.67"	500mm 19.67"	500mm 19.67"	750mm 29.53"	750mm 29.53"	1000mm 39.37"	1000mm 39.37"	1000mm 39.37"	1000mm 39.37"
Depth (D)	400mm 15.75"	400mm 15.75"	600 23.62"	600 mm 23.62"	800mm 31.50"	800mm 31.50"	1000mm 39.37"	1000mm 39.37"	1500mm 59.06"	1500mm 59.06"
Height (H)	600mm 23.62"	600mm 23.62"	750mm 29.53"	750mm 29.53"	900mm 35.43"	900mm 35.43"	1000mm 39.37"	1000mm 39.37"	1000mm 39.37"	1000mm 39.37"
Temperature Range										
Maximum Temperature Level	180°C	180°C	180°C	180°C	180°C	180°C	180°C	180°C	180°C	180°C
Minimum Temperature Level	-40°C	-70°C	-40°C	-70°C	-40°C	-70°C	-40°C	-70°C	-40°C	-70°C
Rate of average Heating	3°C/min									
Rate of average Cooling	3°C/min									
Climatic Range	10°C to 85°C									
Humidity Range	10% to 95% RH									



North American Envirosystems

Tomorrows Environmental Solution Today

Sales Offices

Headquarters

NORTH AMERICAN ENVIROSYSTEMS

4026 Minerva Ave.
Los Angeles, CA 90066, USA
Tel: (310) 736-1901
sales@naenvirosystems.com
www.naenvirosystems.com



USA

Precision Measurement Products

510 Market Loop, Suite 202
West Dundee, IL 60118
Tel: (847) 426-4446
info@precisionmeasurement.com

Stress Analysis Services

Po Box 1225
Bath, Ohio 44210-1225
Tel: 330-666-8696
stressguy@stresshq.com

Quadcomm Associates Inc.

5923 Riverside Drive
Port Orange, FL 32127
Tel : (386) 801-4290
joe@quadcomm.net

ULT Services LLC

6375 Furnace Rd
Suite 320
Ontario NY, 14519
Tel : 315-524-4779
info@ultservices.com

TD Specialists

25 Rocky Point Drive
Bowl, NH 0334
Tel : (603) 224 0985
gcmr@comcast.net

Calright Instruments

2222 Verus Street, Suite C
San Diego, CA 92154
Tel: 619.429.4545
sales@calright.com

Latin America

North American Envirosystems Latina

Mar Negro # 1236
Lomas del Country
Guadalajara, Jal. 44620
(52-33) 3817-8124
naelat@naenvirosystems.com
www.naenvirosystems.com

México

Cientec S.A. de C.V.

Acatempan No. 2112 Col. Chapultepec
Country Guadalajara, Jalisco, 44620
Tel.(52 33) 38-17-81-22-23
ventas@cientec.com.mx
www.cientec.com.mx/

Cientec Monterrey

Duclo Salinas 410-3 Col. Real de
Minas Guadalupe, Nuevo León,
67124
Tel. (81) 83 34 20 73
norte@cientec.com.mx

Cientec, México, D.F.

Estela No. 9 int. 3 Col. Guadalupe
Tepeyac México, D.F. C.P. 07840
Tel. (55) 57 59 2550
centro@cientec.com.mx

Asia

India

CM Envirosystems Pvt. Ltd.,

Unit II: #18, 19, 1st Main, 1st Cross,
KIADB Industrial Area, Dobaspet,
Nelamangala Taluk,
Bangalore, 562111.
Tel: 91 80 27734123/27734561
mktg@cmenvirosystems.com

